




Keno

- The Keno drawing system draws only Keno numbers
 - A primary draw computer and a secondary backup computer generate winning sets of numbers for Keno
 - The software was designed by GTECH Holdings Corporation of Rhode Island, United States
 - Keno draws are conducted and audited at BCLC's Kamloops head office
 - Both computers are housed in a locked cabinet in a secured room
 - Access is restricted and monitored by security cameras, and anyone entering the area is videotaped
 - Neither the central computer system nor the Keno drawing system can be accessed from an external source
 - Both draw computers continuously draw sets of 20 unbiased and unpredictable numbers
 - At five-minute intervals, the central computer system obtains a set of winning numbers from the primary draw computer
 - Continuous draws provide an added measure of security, do not require human intervention, are cost-efficient and energy-smart
 - This is the standard draw technology for keno used throughout the world
 - Keno software has been tested and certified by an independent laboratory to ensure it will generate unbiased and unpredictable numbers
 - Physical and procedural security surrounding Keno draws has been reviewed by KPMG (formerly Peat Marwick Thorne).
- 



**British
Columbia
Lottery
Corporation**

For further information, please call
or write one of our offices:

74 West Seymour Street
Kamloops, B.C. V2C 1E2

phone (250) 828-5500
fax (250) 828-5631

10760 Shellbridge Way
Richmond, B.C. V6X 3H1

phone (604) 276-0649
fax (604) 276-6424

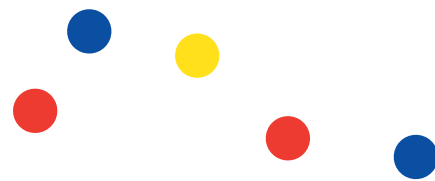
Toll-Free from elsewhere in B.C.
1-866-815-0222

E-mail consumerservices@bclc.com
Web site www.bclc.com

If gambling is
a problem for you
or someone you know,
call toll free:
1-888-795-6111



**HOW ARE
LOTTERY
NUMBERS
DRAWN?**



How are lottery numbers drawn?

Have you ever wondered how lottery numbers are drawn? Here is an introduction to how these procedures take place.

British Columbia Lottery Corporation (BCLC) has stringent physical and procedural security in place to ensure the integrity and security of all our draws.

Lotto 6/49



- A Ryo-Catteau draw machine draws Lotto 6/49 numbers
- The Ryo-Catteau is a standard and traditional ball machine manufactured by Ryo-Catteau of Wattrelos, France
- Lotto 6/49 draws are conducted by the Interprovincial Lottery Corporation at the CTV studios in Toronto
- The 49 balls are made of solid India rubber, manufactured to exact tolerances
- The numbers on the balls are ingrained in the rubber so that the weight of each ball is the same
- All the balls are regularly tested for weight, resilience, sphericity, volume and density
- Representatives from an independent auditing firm audit every aspect of the Lotto 6/49 draw to ensure its integrity



Lotto Super 7

- The Lotto Super 7 draw takes place in the same way as the Lotto 6/49 draw
- A Ryo-Catteau draw machine is used to draw the winning numbers for Lotto Super 7
- Lotto Super 7 draws are conducted in Toronto by the Interprovincial Lottery Corporation
- The 47 balls are made of solid India rubber, manufactured to exact tolerances
- The numbers on the balls are ingrained in the rubber so that the weight of each ball is the same
- All the balls are regularly tested for weight, resilience, sphericity, volume and density
- Representatives from an independent auditing firm audit every aspect of the Lotto Super 7 draw to ensure its integrity



BC/49, Extra and Daily 3

- An Automated Draw Machine (ADM) draws BC/49, Extra and Daily 3 numbers
- ADM use commenced in 1991
- The ADM is a stand-alone computer separate from the lottery's central computer system
- Draws are conducted and audited at BCLC's head office in Kamloops
- The ADM simulates a Ryo-Catteau draw ball machine and draws the required numbers for each game in an unbiased and unpredictable manner
- The ADM process was audited by KPMG (formerly Peat Marwick Thorne), by the head of statistics at the University of British Columbia and by two independent consultants
- Auditors found that each and every number has an equal chance of being drawn and that the selection of numbers cannot be predicted
- Extensive physical, hardware, software and procedural security are in place to ensure the integrity of the ADM draws
- Compared to Ryo-Catteau, the ADM is a faster, less expensive and maintenance-free system
- The software was developed by British Columbia Lottery Corporation (BCLC)
- To attend a live draw call Customer Service at BCLC (please see over for phone numbers)